

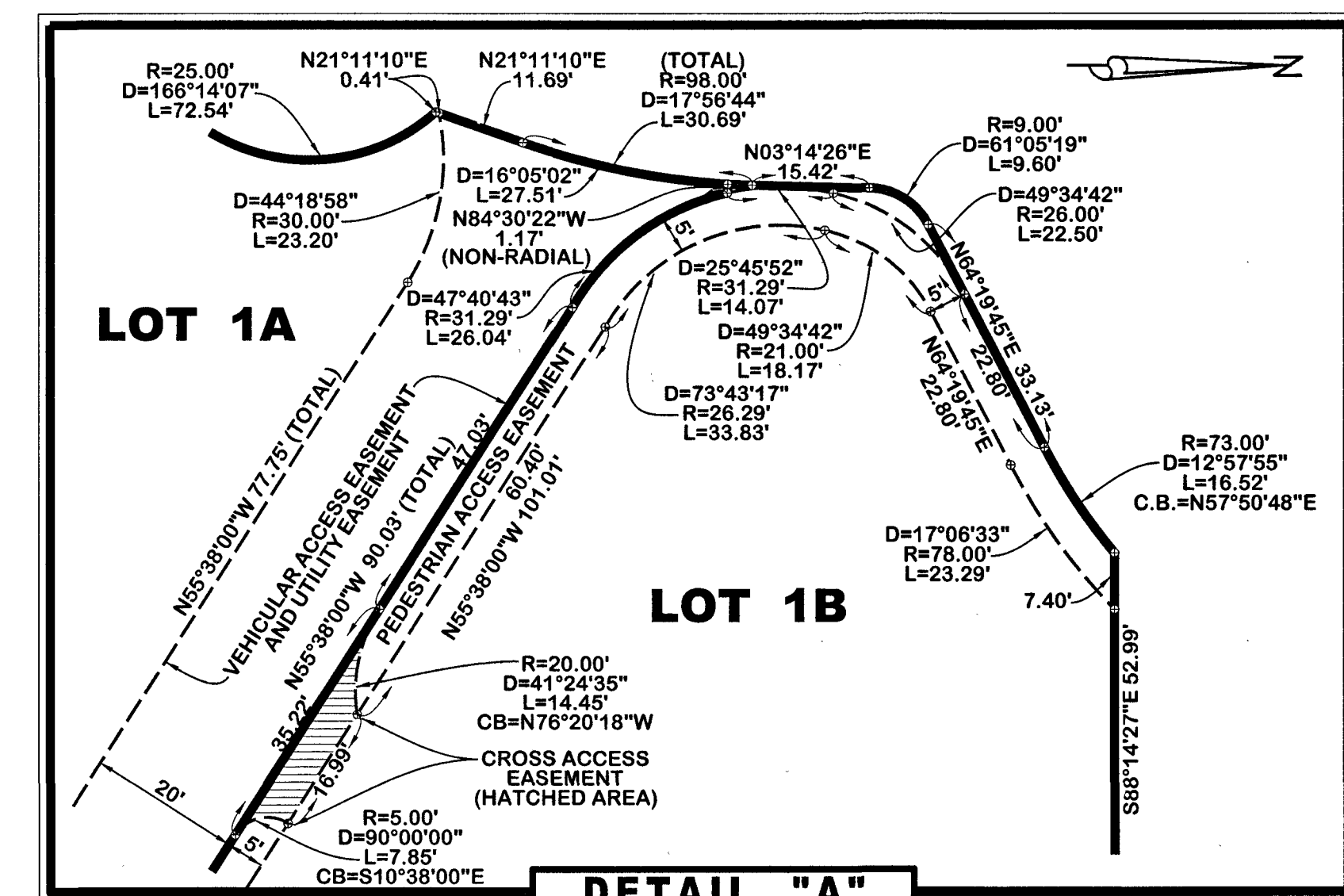
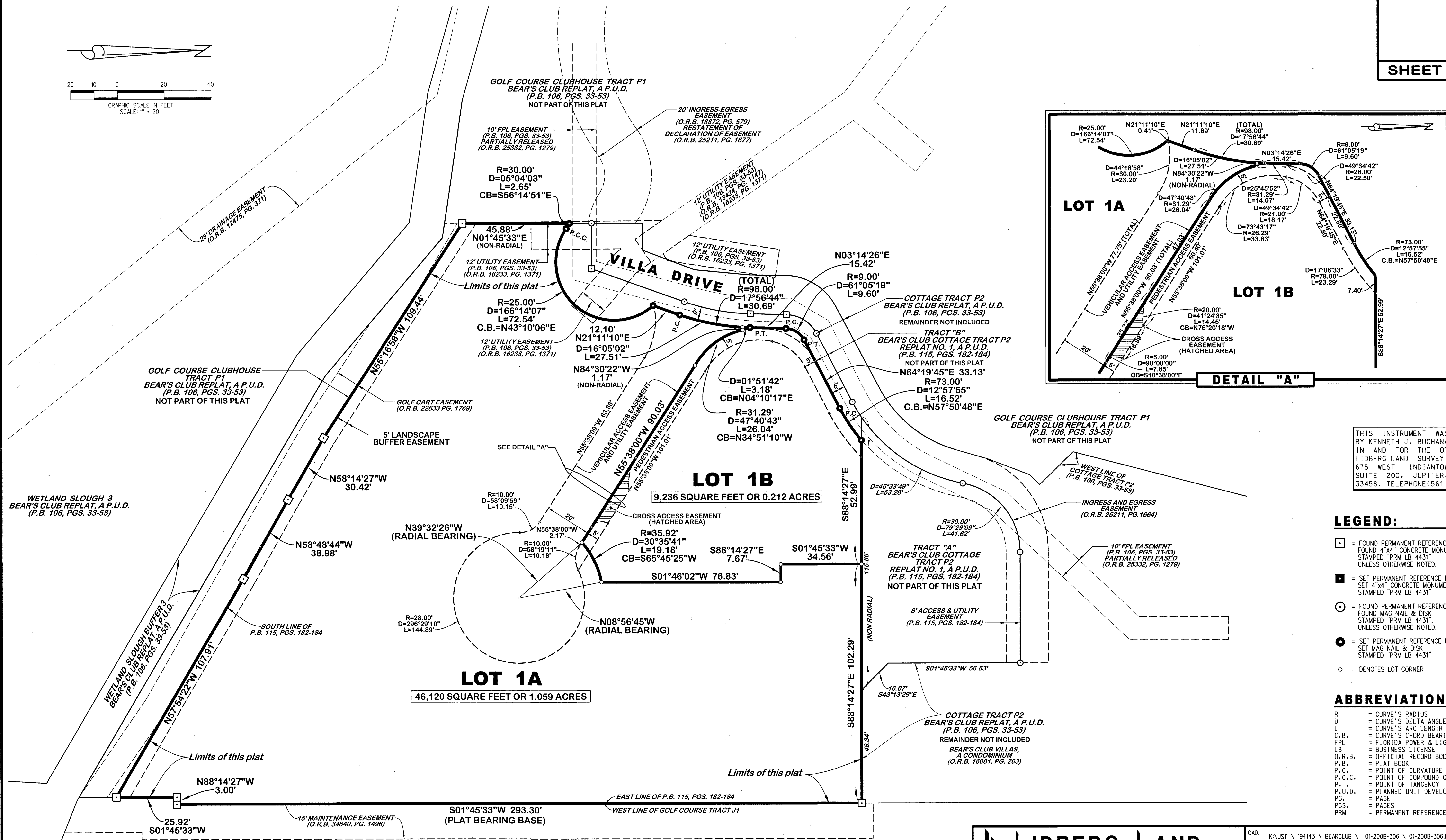
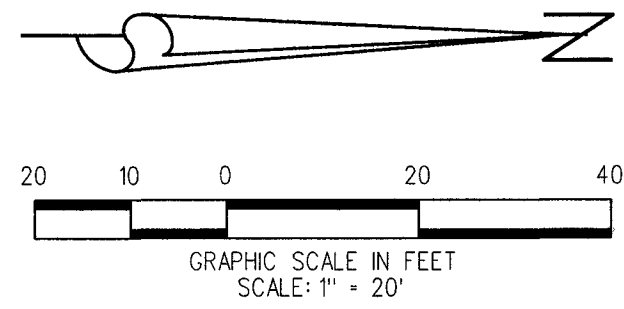
# BEAR'S CLUB COTTAGE TRACT P2 - REPLAT NO. 2, A P.U.D.

BEING A REPLAT OF LOTS 1 AND 2, AS SHOWN ON THE PLAT OF BEAR'S CLUB COTTAGE TRACT P2 - REPLAT NO. 1, A P.U.D., RECORDED IN PLAT BOOK 115, PAGES 182 THROUGH 184, PUBLIC RECORDS OF PALM BEACH COUNTY, FLORIDA LYING IN SECTION 19, TOWNSHIP 41 SOUTH, RANGE 43 EAST, TOWN OF JUPITER, PALM BEACH COUNTY, FLORIDA

MARCH 2024

8

SHEET 3 OF 4



THIS INSTRUMENT WAS PREPARED BY KENNETH J. BUCHANAN P.S.M., IN AND FOR THE OFFICES OF LIDBERG LAND SURVEYING, INC., 675 WEST INDIANTOWN ROAD, SUITE 200, JUPITER, FLORIDA 33458. TELEPHONE (561) 746-8454.

- LEGEND:**
- = FOUND PERMANENT REFERENCE MONUMENT (P.R.M.) FOUND 4"x4" CONCRETE MONUMENT STAMPED "PRM LB 4431" UNLESS OTHERWISE NOTED.
  - = SET PERMANENT REFERENCE MONUMENT (P.R.M.) SET 4"x4" CONCRETE MONUMENT STAMPED "PRM LB 4431"
  - = FOUND PERMANENT REFERENCE MONUMENT (P.R.M.) FOUND MAG NAIL & DISK STAMPED "PRM LB 4431" UNLESS OTHERWISE NOTED.
  - = SET PERMANENT REFERENCE MONUMENT (P.R.M.) SET MAG NAIL & DISK STAMPED "PRM LB 4431"
  - = DENOTES LOT CORNER

- ABBREVIATIONS:**
- R = CURVE'S RADIUS
  - D = CURVE'S DELTA ANGLE
  - L = CURVE'S ARC LENGTH
  - C.B. = CURVE'S CHORD BEARING
  - FPL = FLORIDA POWER & LIGHT COMPANY
  - LB = BUSINESS LICENSE
  - O.R.B. = OFFICIAL RECORD BOOK
  - P.B. = PLAT BOOK
  - P.C. = POINT OF CURVATURE
  - P.C.C. = POINT OF COMPOUND CURVATURE
  - P.T. = POINT OF TANGENCY
  - P.U.D. = PLANNED UNIT DEVELOPMENT
  - PG. = PAGE
  - PGS. = PAGES
  - PRM = PERMANENT REFERENCE MONUMENT

**LIDBERG LAND SURVEYING, INC.**

LB4431 675 West Indiantown Road, Suite 200, Jupiter, Florida 33458 TEL. 561-746-8454

CAO. K:\UST\194143\BEARCLUB\01-2008-306\01-2008-306.DGN		
REF.	FB. PG.	JOB 01-2008-306
FLD.		DATE MARCH 2024
OFF. CASASUS		
CKD. D.C.L.	SHEET 3 OF 4	DWG. D01-200PP